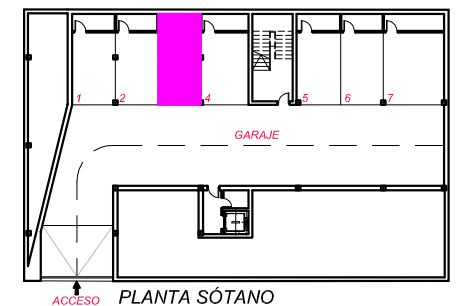
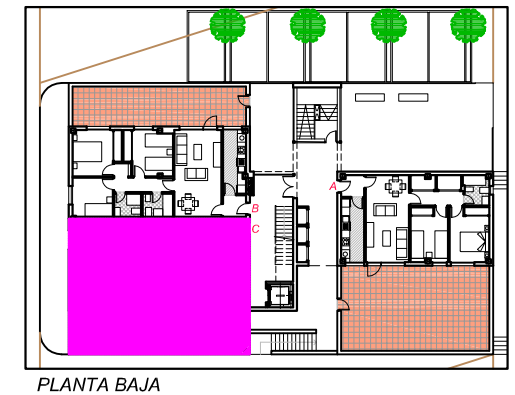
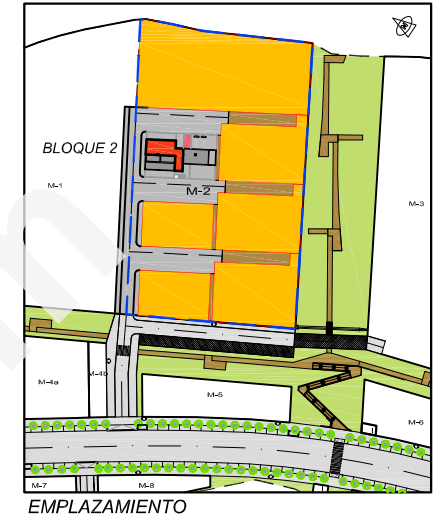
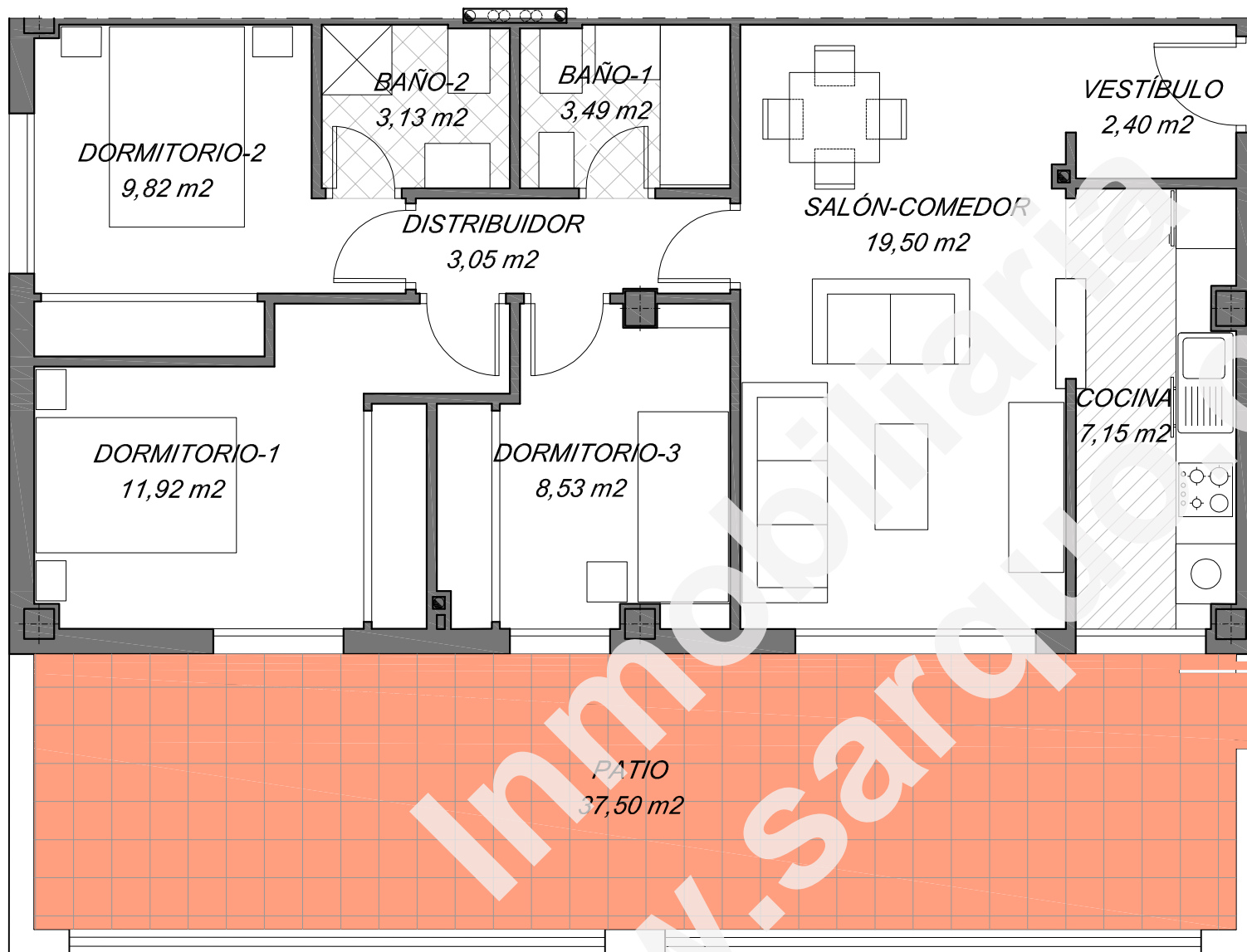


RESIDENCIAL EL GRULLO. BLOQUE 2. PLANTA BAJA, LETRA C



TIPO DE VIVIENDA= 3 DORMITORIOS

S. CONST. VIVIENDA= 78,88 m²

Z.C.= 14,70 %

S. CONST. VIVIENDA + Z.C.= 99,19 m²

S. UTIL VIVIENDA= 69 m²

S. TRASTERO + PLAZA DE GARAJE= 18,52 m²

S. PATIO= 37,50 m²

BLOQUE 2 (7 viv.)
PLANTA BAJA VIVIENDA "C"